



New Health Sciences Library Coming in May 2022

Leah DeSantis, Active Edge & Research Services Librarian,
Health Sciences Library

Tania Bardyn, Associate Dean for Health Sciences, UW
Libraries

 HSL Active Edge Library location



Image credit: Miller Hull Partnership, Lease Crutcher Lewis, GGN, S/L/A/M Collaborative

Health Sciences Education Building

The library space is located on the Third floor of the Health
Science Education Building (HSEB)

Construction Budget: \$60 million



Image credit: Miller Hull Partnership, Lease Crutcher Lewis, GGN, S/L/A/M Collaborative

Program Goals



Interprofessional Education



Active Learning



Simulated Learning

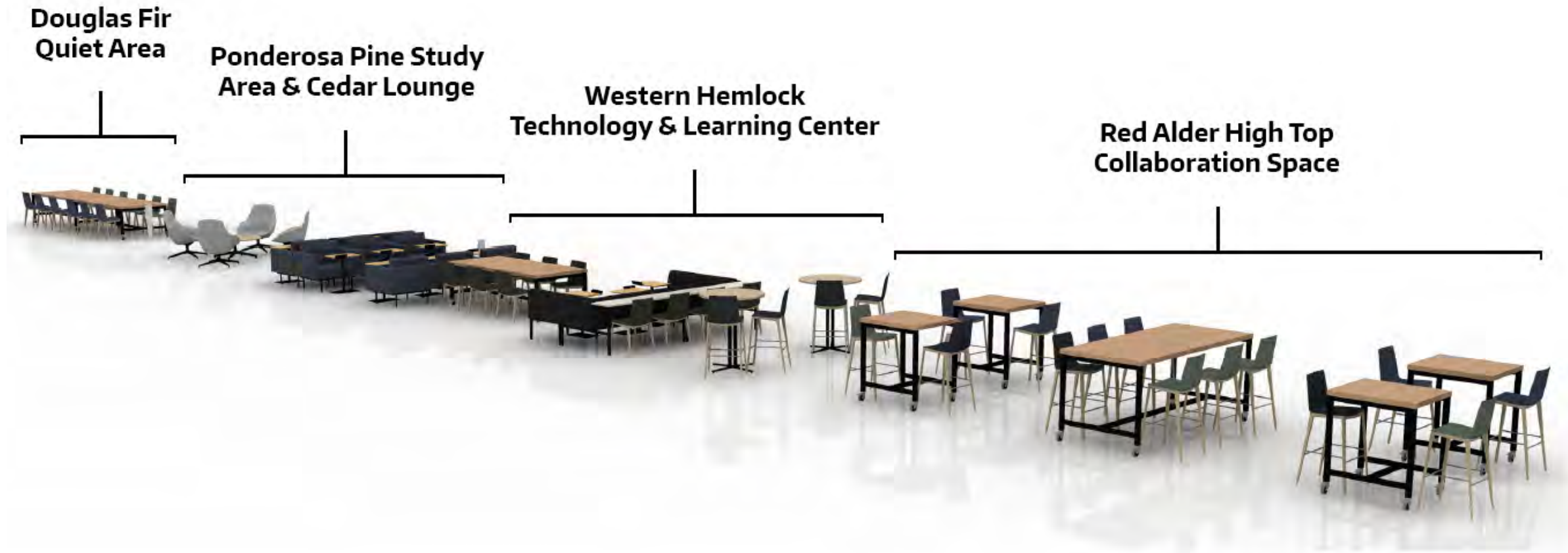


Information Synthesis & Data Management



Image credit: Miller Hull Partnership, Lease Crutcher Lewis, GGN, S/L/A/M Collaborative

Library Areas Named After Pacific Northwest Trees



Red Alder High Top Collaboration Space

- > Four small high top tables, each with 2 high top chairs
- > One larger high top table that can sit 6 people
- > Maximum seating is 14 people or 6 for socially distanced seating



Western Hemlock Technology & Learning Center

- High Top Seating
- Data Visualization Table
- Flat panel display
- Digital video inputs at the partition for use at the table with a portable device
- Video camera with integrated sound bar and microphone
- Maximum seating is 20 people
- 10 for socially distanced seating

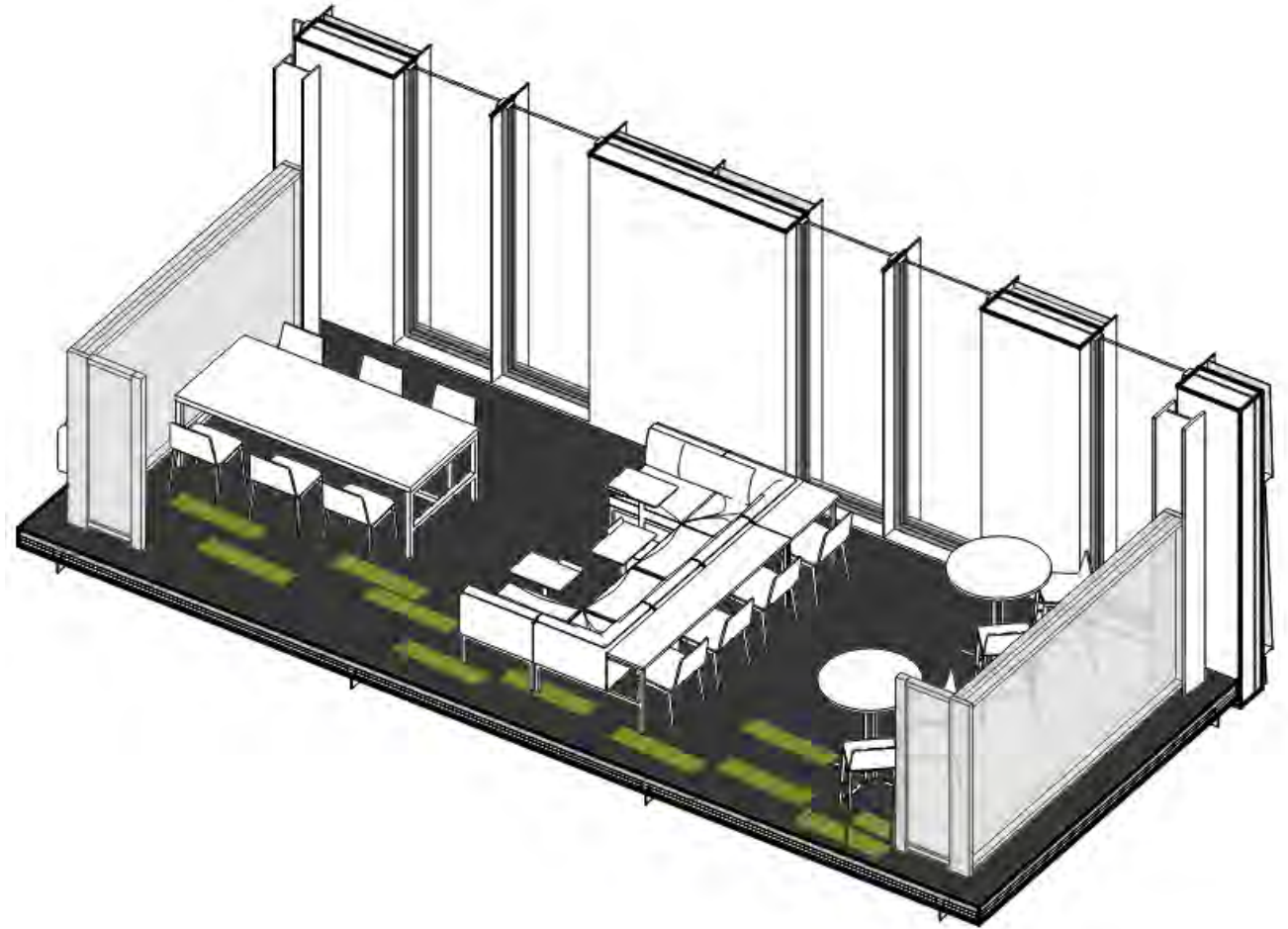


Image credit: Miller Hull Partnership, Lease Crutcher Lewis, GGN, S/L/A/M Collaborative

Western Hemlock Technology and Learning Center

Red Alder High Top
Collaboration Space

Research
Help and
Information
Desk

Ponderosa Pine Study Area & Cedar Lounge



"Ponderosa Pine Blossoms" by Jo Zimny
Photos Jo is licensed under CC BY-NC-ND 2.0

- > The Study area has seating for 9 people
- > The Lounge has 4 chairs and a table
- > Maximum seating 13 people
- > 7 people for social distanced seating



"Big Cedar Tree - Olympic National Park - Washington State" by Dougtone is licensed under CC BY-SA 2.0

Douglas Fir Quiet Area

- > Two large tables that can seat 12 people
- > Quiet group study or individual study
- > Maximum 6 students for socially distanced seating



"Douglas-fir Cone" by born1945 is licensed under [CC BY 2.0](#).

Library Support & Service Ideas



Scholarly
Communications



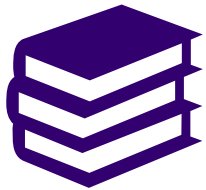
Systematic Reviews &
Knowledge Synthesis



Consultations



Citation Management



Publishing & Research
Impact



Research Data
Management



REDCap Support



Database Searching



Thank you!

All those in the UW Libraries who contributed to this presentation!

For Questions about Programming and Services email Leah DeSantis:
desa3413@uw.edu